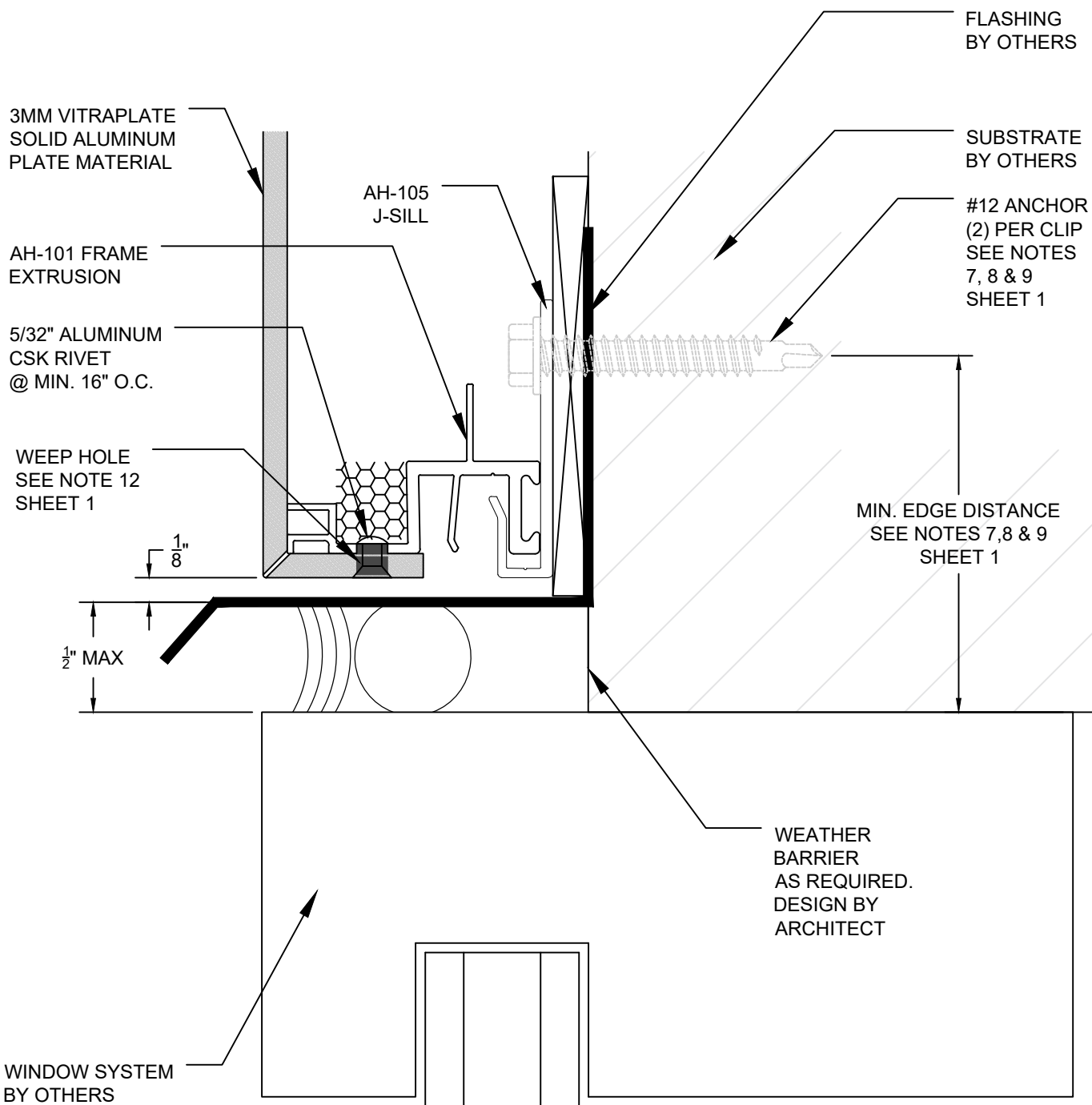


IF SELF TAPPING SCREWS
PENETRATE WEATHER
BARRIER, THESE LOCATIONS
MUST BE SEALED

#10 X 3/8" SELF TAPPING
SCREWS MAY BE USED WITH
EXTERIOR INSULATED WALLS.



Sheet

15

Drawn By

JSJ

Date Drawn

10/12/23

Revisions

No 1 Date 1/18/21

No Date

Project Number

DWG-01

Project

ARROWHEAD FLEX DISSIMILAR METALS-SILL - CLIP INSTALLATION

© Copyright Fairview Architectural LLC - Patented and/or Patent Pending



www.fairview-na.com